



Storage Systems

BATTERY INVERTER 50K / 88K



- **Maximum power density**
- **Highest serviceability**
- **Suitable for 2nd life battery applications**
- **Wide AC and DC voltage range above average**



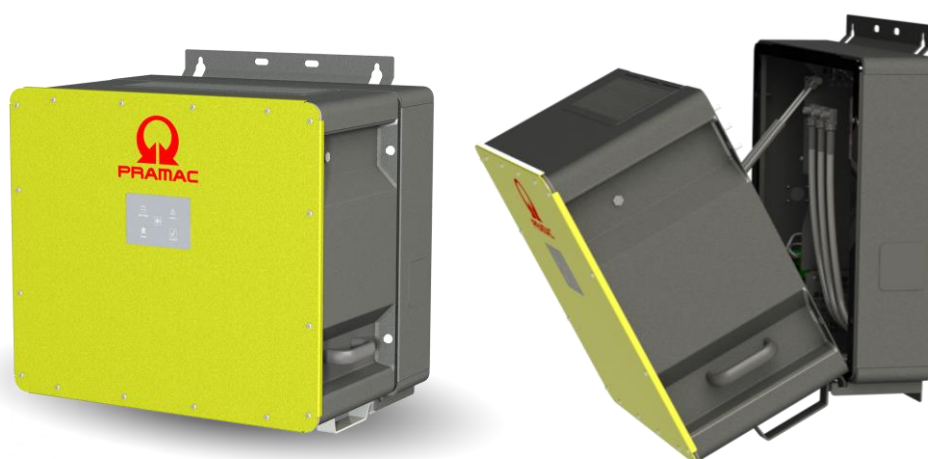
- **Commercial and Industrial Buildings** – Peak Shaving, Self consumption, Time of Use
- **Buffer storage for EV fast charging** – increasing the usable output
- **Agricultural buildings** – use of PV electricity after end of EEG
- **Urban storage or new buildings** – reducing the load on the transformer



- **Pramac Storage Systems** – leading supplier of power electronics
- **Proven technology** – For a wide range of battery applications
- **Strong team** – with a global partner
- **Reliable energy storage solutions** – Indoor / Outdoor / Container



TECHNICAL DATA BATTERY INVERTER



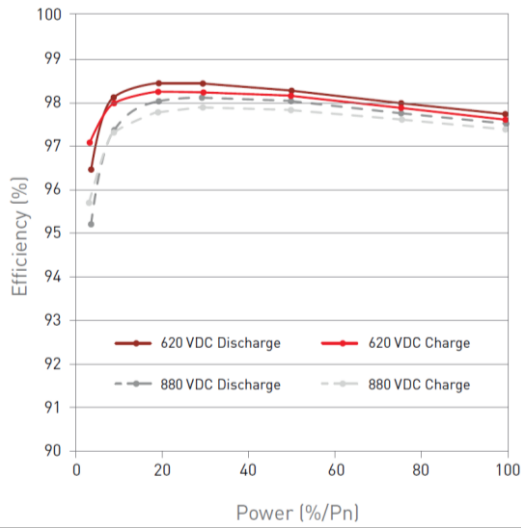
TECHNICAL DATA	PBI 88K	PBI 50K
Art. Nr. Standard	420P088.120	420P050.120
Art. Nr. DC precharge integrated	421P100.110	421P050.110
DC Data		
DC operational range min. – max. (V)	620 – 1.000	
DC voltage range at nominal power (V)	650 – 900	
Nominal voltage DC (V)	720	
Max. operational current DC (A)	155	
DC connection PowerUnit - ConnectionBox	1 Plus, 1 Minus: Connector with Button Activated Coupling	
AC Data		
Apparent power (kVA)	88	50
Rated voltage AC 3-Phase, Uac (V)	400	
AC operational range min. – max. (V)	180 – 528	
AC grid connection / Grid types	3 Phasen, PE / TT, TN-C, TN-S	
Nominal power factor / Range	1 / 0.3i ... 0.3c	
Rated frequency / Frequency Range (Hz)	50, 60 / 45 ... 65	
Max. AC current, I _{max} (A)	128	
Max. AC short circuit current (A rms)	64 (3 period average)	
Inrush current (peak / duration)	25 A / 0.5 ms	
Max. THD (%)	< 3	
Max. efficiency (%)	98,6 (applied standard IEC 61683)	
Maximum admissible external AC fuse	160 A, gG, U _n = 500 V	
Maximum admissible external DC fuse	200 A, gR, U _n = 1.000 V	
Peak current (I _p) / Initial short circuit current (I _k) acc. IEC 60690-0 (A)	128 / 325	
AC connection PowerUnit - ConnectionBox	Connector with Button Activated Coupling	

TECHNICAL DATA BATTERY INVERTER

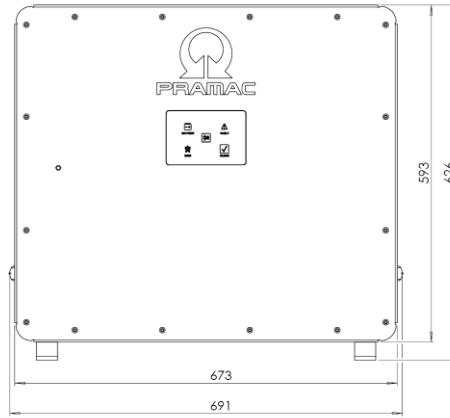
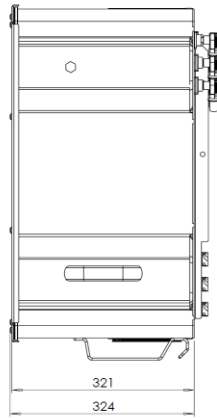
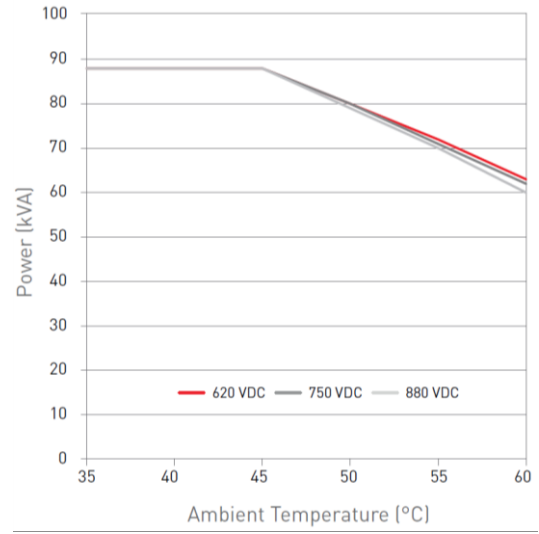
TECHNICAL DATA	PBI 88K	PBI 50K
Art. Nr. Standard	420P088.120	420P050.120
Art. Nr. DC precharge integrated	421P100.110	421P050.110
Ambient Conditions		
Cooling	Smart active cooling	
Max. temp. for nominal power (°C)	45	
Ambient temperature (°C)	-25 to +60	
Rel. Air humidity (%)	0 – 100	
Max. elevation (m above sea level)	3.000	
Noise level (dBA)	< 70	
Environment classification (IEC 60721-3-4)	4K4H	
Type of protection	IP65	
Installation type	indoor / outdoor, vertical / flat	
Safety and Protection Functions		
Safety and protection devices	Refer to ConnectionBox	
Grid monitoring (acc. DIN V VDE V 0126-1-1)	Voltage, Frequency, Passive and Active Anti-Islanding, DC injection	
Grid separation	Gate Block / redundant Grid Relays	
Compatibility external RCD	Type A / Type B	
Protection class (IEC 62109)	1	
Overvoltage category (IEC 60664-1)	DC: II / AC: III	
DC-precharge	420: no (not integrated) 421: integrated	
General Data		
Topology	Transformerless	
DC pole grounding	not allowed	
Status display / Keys	4 LED's (DC status, AC status, Fault, Bluetooth®) / 2 Keys (Connect, Clear)	
Interfaces	2 × Ethernet (Daisy-Chain), Bluetooth® BLE, 1 × Remote Off Signal	
Communication Protocols	Sunspec / MESA (Modbus TCP)	
Dimensions W × H × D (mm)	673 × 626 × 321	
Weight (kg)	69	
Certificates		
EU Directive	2014/30/EU / 2014/35/EU / 2014/53/EU / 2011/65/EU IEC 62109-1 / IEC 62109-2 / IEC 62116 / IEC 61727 / IEC 62477-1 / IEC 61439-1 / IEC 61439-2 / ETSI EN 300 328 V.2.1.1	
Product	EN 61000-6-2 / EN 61000-6-4 / EN 61000-3-12 / EN 61000-3-11	
EMC	IEC 60068-2-1 / -2-2 / -2-30 / -2-78 / -2-14 / -2-6 / -2-27 / -2-75	
Environment	DIN VDE V 0126-1-1 / VDE AR-N 4105:2018 / VDE AR-N 4110:2018 / TOR Erzeuger Typ A / UTE C15-712-1 VFR 2019 / G99 / EN 50549-1/-2	
Grid Codes		

All certificates are available at www.pramac-storage-systems.com

EFFICIENCY



POWER / TEMPERATURE



CONNECTIONBOX 940P300.100

